

# ST DAVID'S ANGLICAN CHURCH CHELMER – GRACEVILLE



## PROFILE – 2021

## TABLE OF CONTENTS

1.	St David's Community	3
2.	Vision	5
3.	Infrastructure	6
4.	Staffing	9
5.	Committees	9
6.	Church Services	10
6.	Active Ministries	11
7.	Characteristics and traditions	12
8.	Financial Information	12
9.	Our new Rector	13
10.	Contact Information	14

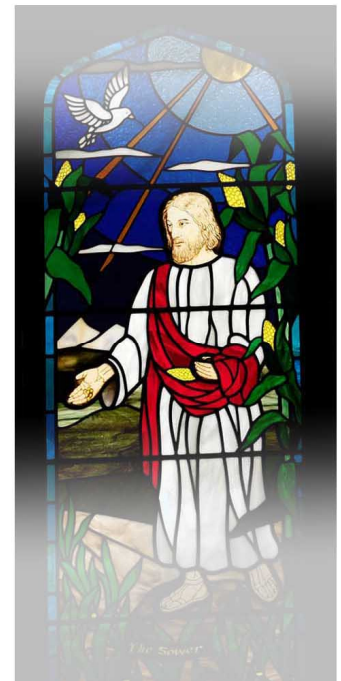
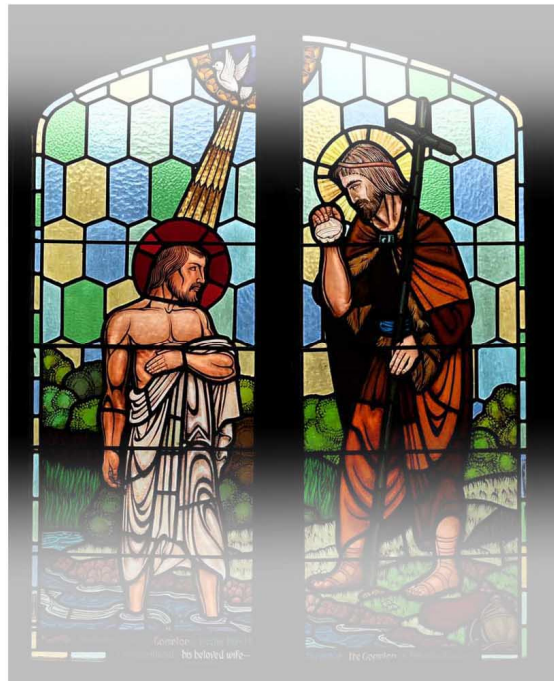
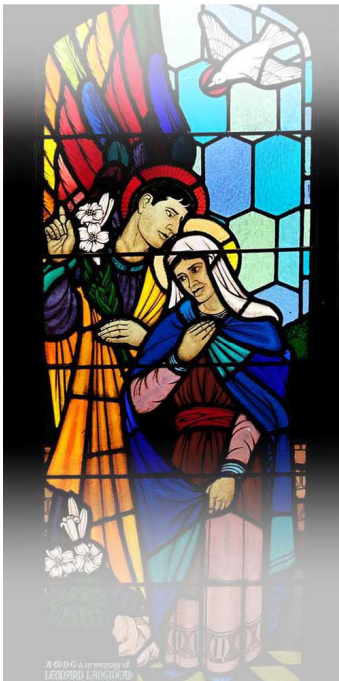
**St Davids Anglican Church**  
**Chelmer Graceville**



# 1. St David's Community

## *History & Location*

The St David's Anglican community of Chelmer/Graceville began meeting in the School of Arts Hall in 1923, building the current Church in 1939. Originally, Chelmer and Graceville were part of the adjoining Parishes of Sherwood and Indooroopilly before combining to form the Parish of Chelmer/Graceville in 1923. Having begun as a farming community growing sugar cane, Chelmer and Graceville are leafy well-established suburbs only 9km to the west of the CBD. They are serviced by bus and rail, both of which pass close to the Church. The suburbs are multicultural in nature and the St David's congregation reflects this diversity. The Church buildings (Church, Hall and Rectory) take up three corners of the Chelmer St East and Appel St intersection in Chelmer. Our Church has a fine collection of stained-glass windows and is heritage listed. Our congregation is composed of adults and children of all age groups and cultures.



## *Church Community*

The Parish has a vibrant community characterized by: -

- Worship services which are relevant to the range of people within our worshipping community. There are two distinct styles of service - a traditional style and a contemporary/family style. They are not in competition with each other but rather complement each by providing for the diverse needs of our congregation and easily coexist side by side in worship provided.
- Using people's gifts, abilities, passions, and energies to shape our church community.
- Maintaining spiritual growth in individuals and groups within the Parish.
- Developing a range of small groups to meet a diverse range of spiritual, social and emotional needs.
- Assisting the Surhim Korean Church to integrate into the St David's community.
- Our leadership structures reorganized to make us more responsive to our changing community.
- Providing efficient administrative structures to support the work of the members of the Parish.



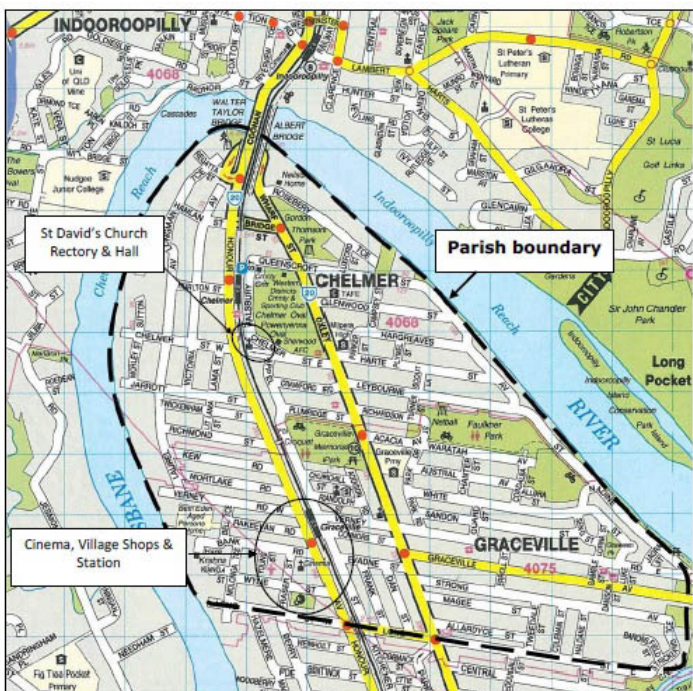
- Reorganising our physical spaces and infrastructure to enable the vision of the Church to be met.

## *Local community*

The Chelmer and Graceville community consists mainly of people of Anglo-Celtic and European origin, although there are other cultural backgrounds. There is a perception that, being older suburbs with long established families, that the age demography is skewed to the older end of the age spectrum, however census data (2016) shows a predominance of young families in the middle-income group. 'The median age of people in Chelmer (State Suburbs) was 39 years. Children aged 0 - 14 years made up 23.1% of the population and people aged 65 years and over made up 13.0% of the population.' 78% of dwellings are owner occupied.

The demographics of the church though is weighted towards the older age group. In a recent Church Life survey 62% of the respondents were in the 70+ years age bracket. The regular congregation has many retirees interspersed with working people and some younger families. The congregation comes from a wider area than Chelmer and Graceville and this would be particularly true for the Korean congregation.

There is an indigenous history in the parish as well with a bora ring being once located nearby. The current church site was the place to watch ceremonies being performed and all this was beside a lagoon (now an oval) covered in the blue flowers of water hyacinth. The Church maintains links with the local indigenous community the Benarrawa Community Development Association. Oxley Creek was first known as Benarrawa, and its surrounding catchment provided abundant resources for the Jagera people and the Turrbal people.





## 2. Vision

For the past 8 years, the Parish has had a dynamic vision for the spiritual growth of its worshipping community with the leadership and infrastructure to support this vision. This is underpinned by our Mission Statement: 'Releasing our Church for the Mission of Jesus Christ'. We have developed a community which is intergenerational and inclusive of gender, age, race and ability. We developed in our community the capacity to grow and adapt to and with our changing world always being mindful of the framework of our traditional Anglican faith. Our Mission Action Plan (MAP: 2015-2020) has been instrumental in outlining the plans for the Parish to move confidently forward with its vision. The MAP is constantly reviewed to monitor progress towards our goals. A major review of the MAP will be conducted in 2021.

The (2015-2020) plan includes a focus on the following topics: -

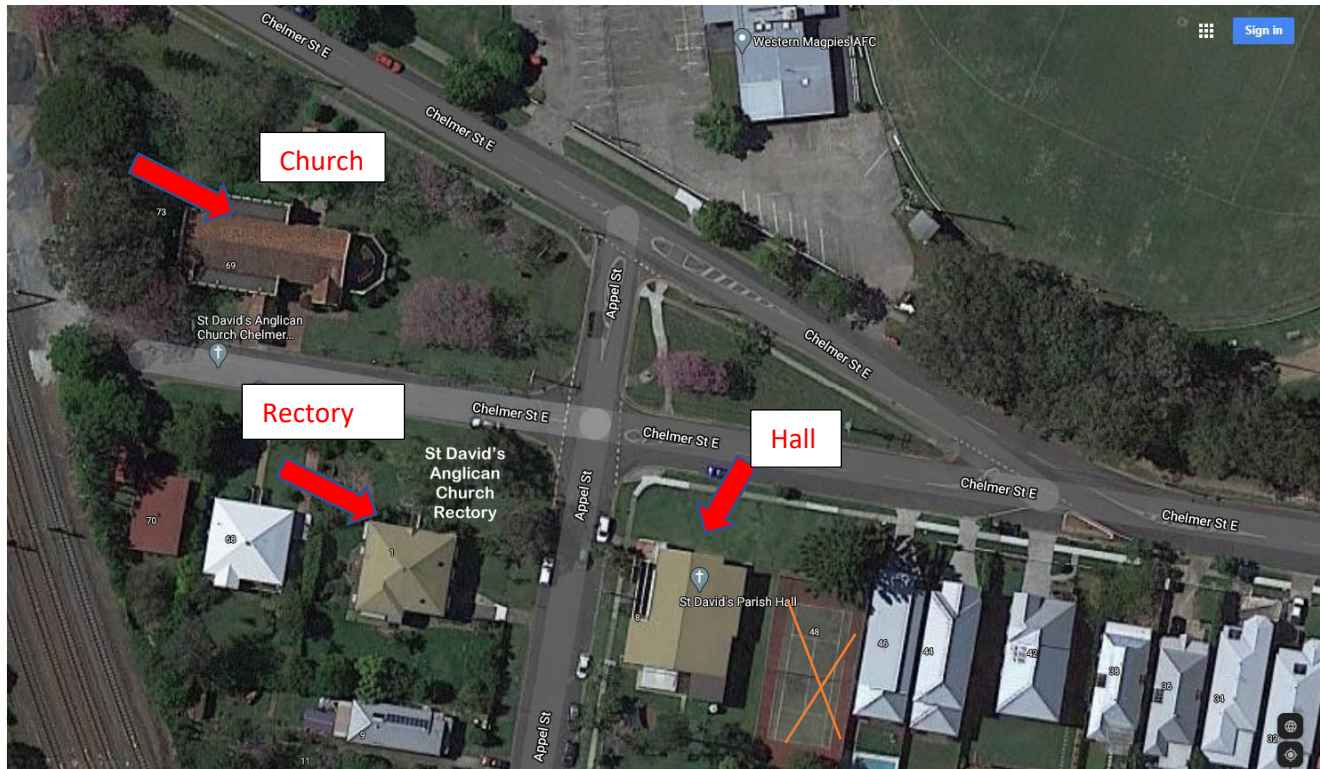
**Sacramental Worship,  
Christian Growth,  
Pastoral Care,  
Mission and Service,  
Children's Youth and families,  
Welcoming and integrating the Korean congregation,  
Financial viability,  
Establish lay ministry and leadership,  
Redevelop infrastructure to meet mission goals,  
Work collaboratively with the local Anglican community.**

Leadership and administrative support have been in place for some time. The redevelopment of the physical infrastructure has taken some more time. Significant projects are underway this year redeveloping physical spaces within the church footprint. The redevelopment of infrastructure is being managed by the Project Control Group (PCG) which includes members from both Parish and Diocese.



### 3. Infrastructure

To enable the Parish vision to be met, a review of the Parish infrastructure was recently undertaken as a part of the MAP. Three distinct infrastructure areas were recognised - the church, the rectory and the parish hall with its adjoining tennis court. Unsurprisingly, over time it has been increasingly difficult to fund maintenance on all three properties.



#### *Church*



Following 2-3 years of discussion of options, it was decided in 2017 to focus Parish life into the Church building and allow our beautiful church building to be used more than 1 or 2 days per week. No longer was the Church only used for worship but became the focal point of all Parish activities including meetings, fete, concerts, youth activities, social activities, Bible study, spiritual education, meeting spaces and any other parish activity where community gathering was needed.



This vision required re-orienting the Church to face the East and reconfiguring the Western End of the church to allow greater flexibility. This reverted the Church to its original orientation of having the altar at the Eastern end of the Church. A faculty was approved for this reconfiguration in 2018. The faculty included changes to the Church furniture. Some of the pews have been removed and replaced with chairs to allow for the flexibility we desired. Seating is now a mix of pews and chairs, with pews taking up the front eastern half of the Church and chairs the western end, which most lends itself to the flexible use of space for a wide range of activities. To further enhance this reconfiguration, building works will commence to the western end of the church building during 2021 to allow the Parish Office to relocate to the church building, install a small kitchenette to aid in hospitality and provide a much-needed disabled toilet. A children's education area (Sunday School & Catechesis of The Good Shepherd) will be run in a soundproof area where the side chapel currently is located. Following analysis of several funding options, sale of the tennis court land was the strategy decided on to fund this work.

## *The Rectory*



The current Rectory site on the corner of Appel and Chelmer Street East was purchased in 1957. The rectory building is a Queenslander style home, renovated by the Parish in 1996 to Diocesan standards. However, as it has been 25 years since this renovation, further renovations are now required to bring this building up to the Diocesan housing standard required for the building to once again be used as the Parish Rectory.

At the request of our last Rector, the Rector and his family lived off site in their own home and the Parish paid an appropriate housing allowance. The Rectory is currently rented on a yearly lease with rental income allowing for the costs of the housing allowance to be off-set.

For any new Rector appointed to the Parish, Rectory accommodation would need to be negotiated with 3 possible options being considered. Option 1: The new Rector would continue to live in own home and be paid the suitable housing allowance. Option 2: The Parish could rent suitable Rectory accommodation for the Rector and family within the Parish boundaries. Option 3: The Parish upgrade the current Rectory to the Diocesan standard (depending on Parish funding and time needed to complete the upgrades).

It is worth noting, that there remains consideration of developing the two blocks of land that the current Parish Hall is situated on. Should this occur, one of the blocks of land would be used to build a new Rectory building – purpose built to Diocesan standards.

### ***Parish Hall:***



The parish hall grounds are situated on a separate block of land diagonally opposite the church site. The hall is accessed by crossing Appel St which over the years has become a busy road. This raised WH&S issues for the Parish when people, and particularly children, are moving from one site to the other and is another reason to focus Parish activities on the Church block.

The large block of land on which the hall is situated previously spanned 4 suburban blocks and included a tennis court. The hall is situated on 2 blocks, and the tennis court was situated on 2 blocks. At this time, the tennis court blocks have been sold and house construction has commenced on one of the blocks. The hall continues to have regular tenants and provides a steady income for the church.

While some upgrades were carried out to the hall in 2012, there is still much to do to bring our hall facility up to our desired standard. This, like all maintenance, is limited by funding.



## 4. Staffing

### *Administrative staff*

There are two positions currently serving the Parish. One position of 15 hours per week is permanent part time and the other position of currently 15 hours per week is casual part time on a contract basis reviewed every three months and is subject to available funds. In this way the Parish office is open for five mornings a week.

### *Clergy*

In addition to the Rector position there are two clergy licensed to the Parish to hold services in the Parish.

## 5. Committees

### *Parish Council*

The **Parish Council** currently has a membership of 10. It meets at least once per month on the fourth Sunday in the month following the 9:30am service.

Committees that report to the Parish Council are as follows:

- Buildings and grounds looks after buildings, maintenance, garden development and upkeep.
- Youth, Children and Training oversees youth and children's ministries and training of leaders. The core of the children's ministry is the Catechesis of the Good Shepherd and has been running at St David's for seventeen years.
- Finance maintains a close overview of income and expenditure and produces regular updates of assets and liabilities.
- PCG (Project Control Group) – plans the church redevelopment project. Its membership is a combination of Parish and Diocese personnel.

### *Wardens Committee*

There are three wardens, two elected by the Parishioners at the AGM and one appointed by the Rector. This committee meets as regularly as required which is usually once a fortnight but can be once a week when necessary.

It is envisaged going forward that the Parish Council will have a strategic forward focused role with the Wardens Committee focused on the day-to-day operational aspects of Parish management.

### *Worship Committee*

There is a highly active Worship Committee within the Parish. The six members meet monthly to discuss variations in worship according to the Church's Year, create rosters, discuss maintenance of liturgical garments and eucharistic vessels, music ministry and other issues pertaining to worship.

### *Grounds and Maintenance Committee*

This is an active committee which manages the work on mowing the grounds and maintaining gardens with the assistance of other parishioners from time to time. This committee also monitors the state of our three buildings and prioritizes and organizes any maintenance work required.

## 6. Church Services

### *Pre-COVID 19*

Pre COVID 19, there were two Sunday services, one at 7:45am and one at 9:30am. The 7.45am service was a traditional worship service and the 9.30am service was a more contemporary family service.

Attendances over the two services ranged between 70-90 weekly.

The third service is a 9.00am Wednesday traditional service with an attendance of less than 10 on a regular basis.

### *2020 services during the COVID 19 pandemic.*

In the period March to May, two services were offered.

One was a prerecorded service. This Service was replaced in June by a live service at 9:30am which was also livestreamed. This service has followed the Diocese and Government COVID protocols with the correct social distancing spacings in the church, sufficient hand sanitizers available, COVID wardens in attendance and cleaning conducted after each service. It was, and still is, livestreamed to reach those who were unable to register in time to procure a seat as well as those who were vulnerable and were unable to attend live gatherings during this time. Holy Communion was in one-kind with participants receiving only the Host.

The Wednesday service has been a phone service designed for those in the congregation who could not manage the IT skills needed to connect to the live streaming service. Each participant rang in on their phone from the comfort and safety of their homes. This allowed for much interaction between participants and the service experienced greater numbers than the live Wednesday services prior to the pandemic. So popular was this service, that it was also introduced at 8am on Sunday mornings.

### *2021*

The two Sunday services were reinstated in February, one at 7:30am and one at 9:30am. This will allow COVID cleaning procedures to be done between services. The viability of both services will be assessed during the first part of the year. The Church leadership will respond appropriately to any changes in the COVID 19 situation.

### *Pastoral Services*

There has been a steady decline in the number of pastoral services as the following figures show.

	Baptisms	Weddings	Funerals
2013	17	10	21
2019	8	1	8



## 6.Active Ministries



**There are a variety of ministries and parish groups covering various age groups in the parish, from little children through to the older generations. These are shown in the following list:-**

- Parish Wardens, Parish Council and Parish Administration.
- There are several bible study groups run by lay people.
- Prayer Groups
- An active Prayer Tree.
- Sacristan and Altar Guild. Many people are involved in worship, LA's, readers, intercessors, sides people and others who prepare for worship and care for the fabric of the church. It would be hoped that any incumbent is happy to continue and facilitate this team approach to ministry.
- Musicians – while we are seeking a permanent musician, the Parish is being served by some gifted musicians from within the Parish.
- Using the Catechesis of the Good Shepherd program it is possible to cater for two groups (atriums) of children - one caters for 3-6 year old's and the other for 6-9 year old children.
- School Youth Group is in a fledgling stage and requires continuing support.
- Preschool playgroup – we have previously run a pre school play group called "Edward Bear" for several years. It is now in recess but we wish to start this again.
- Preschool music group – We wish to get a preschool music group started. Music skills will enhance the role of the new rector and assist us to do this.
- The Stitches group. There is a stitchers groups (sewing and craft) operating in the Parish. This group was founded by a Parishioner as part of a breast cancer recovery group thru the Wesley Hospital. This group remains active with several parishioners attending regularly. The group has an outreach focus but mostly is a happy social group of women supporting each other in times of need.
- There is a Korean Church active at St David's, the Brisbane Surhim Church, which meets in the Church. The pastor, Simon Kim (and his congregation) is seeking further integration into the life of St David's and the Anglican Church and any incumbent will need to be able to mentor and facilitate this process. Pastor Kim has been accepted as a Formation Student.
- School Chaplaincy support
- Pastoral Care that includes hospital, nursing/aged care and home visiting, prayer support, Foodbank and the Inala Pantry, and Care and Concern Group.
- Responsiveness to local disaster events e.g. 2011 floods.

## 7.Characteristics and traditions

St David's has a tradition of Anglican worship in a range of styles. Sunday services are currently at 7.30am and 9.30am. The 7.30 am service is a more traditional Eucharist using the latest version of the Australian Prayer Book, with some sung responses. It is followed by morning tea when COVID procedures can be followed.

The 9.30am service seeks to be intergenerational and includes a children's talk. It would be advantageous if the rector had skills in working with children. It is a slightly shorter and less formal service than the 7.45am and it is followed by morning tea when COVID procedures can be followed. It also uses a PowerPoint outline and a higher proportion of modern Christian music.

A tradition at St David's is its annual Christmas Community Celebration. For over 20 years St. David's held a Christmas Pageant on the church lawns with live animals and members of the congregation combining to retell the Christmas Story with Carol singing. But in more recent years, this Pageant has changed to be a Community Christmas Carol event with a Carol singing in the Church, a small Christmas Market complimented by a free sausage sizzle and children activities on the lawn. This event is always well supported and valued by the Community.

While Music is important in St. David's there is currently no permanent musician to provide this valued ministry. It would be hoped that any new Rector could expand this ministry and new musicians would be found.

St David's has run a successful annual fete for many years except for 2020. This has been financially and socially successful as it has involved people from the local community both as participants as well as visitors.

St. David's takes an inclusive and ecumenical approach to its services and events. We welcome newcomers and encourage communicants from other churches to take part in communion and to stay for morning tea after Sunday services.

*"Christ has no body now but yours. No hands, no feet on earth but yours. Yours are the eyes through which he looks compassion on this world. Yours are the feet with which he walks to do good. Yours are the hands through which he blesses all the world. Yours are the hands, yours are the feet, yours are the eyes, you are his body. Christ has no body now on earth but yours."*

*Teresa of Avila*

## 9. Financial Information

The treasurer prepares comprehensive reviews/statements of the Parish finances for all Parish Council meetings during the year and the Annual General Meeting. The Balance Sheet and Income and Expenditure figures for the AGM are reviewed by the Wardens and a qualified independent Auditor before the AGM.

A copy of budgets 2016-2021 is available on request along with a copy of the MAP 2015-2020.





## **Our new Rector.**

St David's parishioners deeply value their history but recognize the need to remain vibrant and relevant in today's world. The parish is looking for a person who can balance Traditional Anglican values with the changing values and beliefs of today's modern society.

As most Anglican Churches, St David's acknowledges the importance of tradition and holds a high view of the Scriptures. It is hoped that the new incumbent will teach faithfully from the Scriptures in an honest and engaging manner so that the Parish is encouraged in its faith journey with a gracious and loving God who has revealed himself in, and through, our Lord Jesus Christ.

We believe that the key to a healthy parish is a combination of a healthy church and communal life, a strong sense of ministry and outreach, good pastoral care and positive teaching from the Word of God. It is hoped that our new rector will have the commitment, the vision and the skills to continue and facilitate this exciting journey.

Balance traditional and modern. Engaging teacher

People focussed

Team builder

Dynamic

Intergenerational

Visionary

## Contact information.

### *Address*

69 Chelmer St East  
Chelmer  
4068

### *Postal Address*

69 Chelmer St East  
Chelmer  
4068

### *Location of Office*

It is currently located under the St David's memorial Hall on the southern end.

### *Phone*

07 3379 8894

### *Email*

[chelmer@anglicanchurchsq.org.au](mailto:chelmer@anglicanchurchsq.org.au)

### *Website*

[www.stdavidschelmer.com.au](http://www.stdavidschelmer.com.au)

### *Facebook*

[\(1\) st david's anglican church chelmer graceville - search results | Facebook](#)

### *Expressions of Interest*

To lodge expressions of interest for the role of Rector at St Davids Chelmer/Graceville, please contact the Bishop of the Southern Region, Bishop John Roundhill:

[JRose@anglicanchurchsq.org.au](mailto:JRose@anglicanchurchsq.org.au) (Joanne Rose, Personal Assistant, Bishops' Office)